



P.O. Box 1125-30100, Eldoret Kenya  
E-mail: [ajpds@uoeld.ac.ke](mailto:ajpds@uoeld.ac.ke)  
Telephone: +254(0) 788 232 004, +254(0) 740 354 966

## African Institute of Professional and Development Studies (AIPDS)

The African Institute of Professional and Development Studies is an academic knowledge institute at the University of Eldoret, dedicated to the promotion of a multidisciplinary, interdisciplinary and transdisciplinary approach to education and research between the different schools through collaborative research and exchange programmes within a transdisciplinary framework. Established in November 2024, the institute supports the vision to transform and reposition the University of Eldoret through commitment to advancing knowledge, using cutting-edge research and education. The AIPDS is also configured to facilitate collaboration and partnerships with local and international institutions to promote transformative education and research across various fields.

### Philosophy

Responsive, Transformative and Transcendent  
Education and Research

Based on a preferential choice for knowledge  
production within in the larger historical,  
contemporary, and futuristic context in Africa

### Vision

The African Institute of Professional and Development Studies at the University of Eldoret is responding to the emerging trends in Africa's development trajectory and renewed interest in Africa, by providing a transdisciplinary framework and space to strengthen studies in the field of Arts, Humanities, Social Sciences, and Natural Sciences through education, research, training, professional development and exchange programmes. The institutional framework and approach to the programmes are anchored within an epistemology that is decolonial and transformative in terms of different forms of thought, and practice.

## Objectives

1.1. strengthening interdisciplinary education and research to strengthen post-graduate and undergraduate studies, and professional courses for practitioners, policy makers and change agents within the local communities.

2. Creation and facilitation of academic space and a focal point for education, research, and training that draws on the transdisciplinarity and complementarity value of arts, social sciences, humanities and natural science through exchange programmes between knowledge institutes and communities of practitioners.

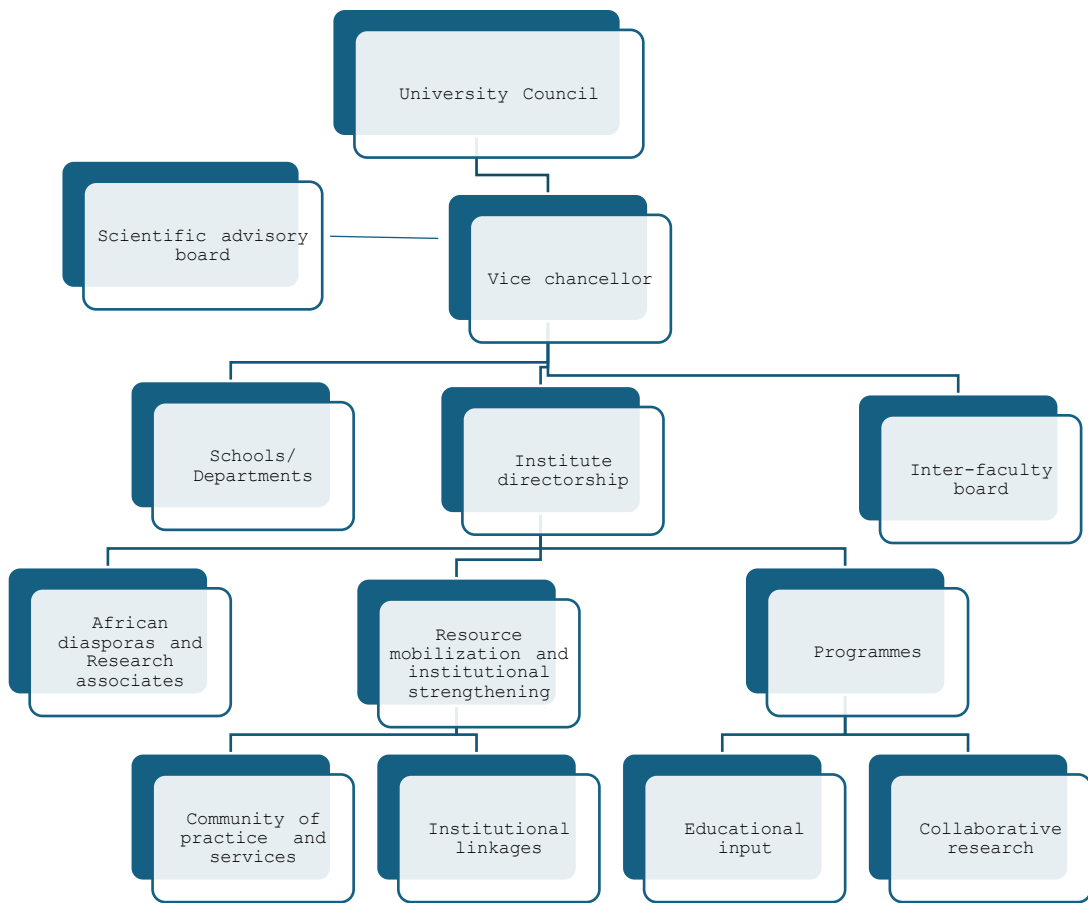
3. Establishment and facilitation of a collaborative research framework that brings together scholars from Africa and other global regions through an epistemological paradigm that pursues interpretations and meanings to the social and natural world as experienced in Africa.

4. Facilitation of transnational linkages to harness the combined academic assets and intangible collective resources by African scholars, researchers, professionals, and their networks in Africa and beyond.

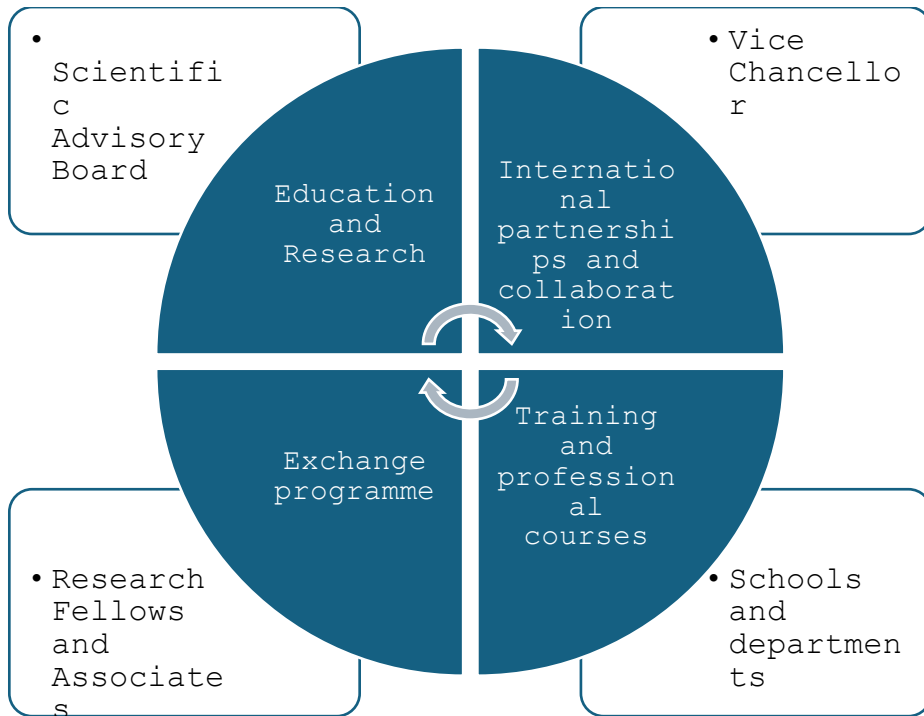
## Areas of focus

Education and Research <i>Postgraduate (MA, MSc, PhD)</i>	Training and professional Courses <i>(Diploma and Certificate)</i>	Exchange programme <i>(within, Kenya, Africa and Global)</i>
<p>A. <b>Philosophy of Science</b> (A common course across the schools)</p> <p>B. <b>MSc - Research Masters</b> (a 2-year Course field research-based thesis)</p> <p>C. <b>MA in Development Studies</b> (a 2-year course with specialisations below, with field research-based thesis)</p> <ul style="list-style-type: none"> <li>- <i>Climate and Environmental Studies</i></li> <li>- <i>Disaster Management and humanitarian action Studies</i></li> <li>- <i>Peace and Conflict Studies</i></li> <li>- <i>Gender and Youth Studies</i></li> <li>- <i>Aquaculture, Blue economy and Sustainable Development</i></li> <li>- <i>Governance, Leadership and Policy Analysis</i></li> <li>- <i>Migration and Development</i></li> <li>- <i>ICT, Digitalisation and Development</i></li> <li>- <i>Education Policy and Development</i></li> <li>- <i>Human Rights and Social Justice</i></li> </ul> <p>D. <b>MA - International Relations and Diplomacy</b></p> <p>E. <b>MA - Africa and Diaspora studies</b></p> <p>F. <b>MSc - Geographical Information Systems</b></p> <p>G. <b>MA - Communication, Media and Journalism</b></p> <p>H. MA- Sociology</p> <p>I. MSc - Psychology</p>	<p>A. Languages</p> <ul style="list-style-type: none"> <li>- <b>Kiswahili, all Kenyan languages and major African languages</b> (<i>Twi, Igbo, Yoruba, Zulu, Wolof, Shona, Amharic</i>)</li> <li>- <b>Foreign languages:</b> <i>German, Chinese, Spanish, French, Russian, Arabic, Portuguese</i></li> <li>- <b>Sign Language</b></li> <li>- <b>International Language Test</b></li> </ul> <p>B. Creative writing &amp; publishing</p> <p>C. Performing, visual Art &amp; Film</p> <p>D. Communication &amp; public speaking skills</p> <p>E. Education &amp; Curriculum Development</p> <p>F. Project Management, Monitoring &amp; Evaluation</p> <p>G. Governance, Leadership and Institutional management</p> <p>H. Disaster preparedness and management</p> <p>I. Peace, Negotiations, conflict resolution, lobbying and advocacy</p> <p>J. Entrepreneurship and Agri-Business</p> <p>K. Agric machinery and operations</p> <p>L. Animal Health and Production</p> <p>M. Environmental Impact Assessment and Audit</p> <p>N. Occupational Safety and Health Management</p> <p>O. Digitalisation, ICT, Artificial Intelligence and Robotics</p> <p>P. Geographical Information Systems</p> <p>Q. Engineering Design and Analysis Software</p> <p>R. Water Resource Management</p> <p>S. Sports, Physical Education and well-being</p> <p>T. Elderly &amp; physically challenged care</p> <p>U. Guidance &amp; counselling</p> <p>V. Administration &amp; Management of Postgraduate Supervision in Universities</p> <p>W. Risk Management</p>	<p>A. Student (credit transfer, field research, double degree, joint degree)</p> <p>B. Researchers and professors</p> <p>C. Collaborative research</p> <p>D. Seminars and workshops</p> <p>E. Educultural travel</p> <p>F. Publishing</p> <ul style="list-style-type: none"> <li>- Journals,</li> <li>- Books,</li> <li>- Magazines</li> <li>- Periodicals</li> <li>- Blogs/vlog</li> </ul> <p>G. Co-teaching and supervision</p> <p>H. Skills exchange and mobility</p> <p>I. International consultancies</p>

## Institutional framework



## OPERATIONAL FRAMEWORK

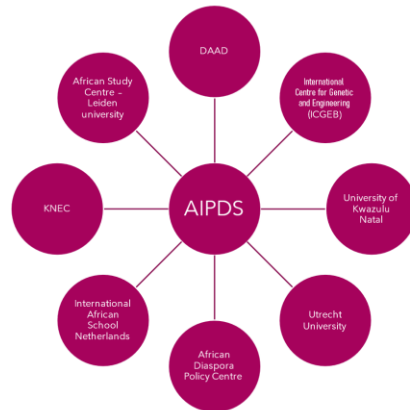


**EDUCATION, RESEARCH AND PROFESSIONAL TRAINING FRAMEWORK**

	Education	Postgraduate Graduate Undergraduate
	Research	Collaborative Tailor-made
	Professional and Institutional capacity strengthening	Academic track Professional track Exchange programme



## NETWORKS AND ALLIANCES



### Scientific Advisory Board

**Prof. Ngugi wa Thiongo (PhD)** - Distinguished Professor of English and Comparative Literature, English (African and Caribbean literature, theatre and film, performance studies, cultural and political theory, University of California, Irvine.

**Prof. Thomas Cheruiyot (PhD)** – Vice Chancellor of the University of Eldoret. Professor of Corporate Social Responsibility (CSR), Sustainability, and Strategy.

**Prof. Phillip Raburu (PhD)** – Deputy Vice-Chancellor (Planning, Research and Extension). An associate professor of Aquatic Resources and Environmental Management.

**Prof. Godfrey W. Netondo (PhD)** – Deputy Vice Chancellor of Academic Affairs, University of Eldoret. Professor of environmental plant stress physiology, agro-biodiversity conservation and ecosystem services nexus.

**Prof. Wilson Ng'etich (PhD)** - Deputy Vice-Chancellor (Administration and Finance). An Associate Professor of Soil Science, University of Eldoret

**Prof. Beatrice Were (PhD)** – Former AG Deputy Vice Chancellor of Academic Affairs, University of Eldoret. Her main Disciplines include Genetics, Biotechnology and Molecular Biology.

**Prof. Miriam Kinyua (PhD)** - Professor plant breeding and biotechnology, School of Agriculture and Biotechnology, University of Eldoret

**Prof. Bruce Mutsavairo (PhD)** - Full Professor and Chair of Media, Politics, and the Global South, Faculty of Humanities Department of Media and Culture Studies, Utrecht University

**Prof. Linnet Gohole (PhD)** - Associate Professor of Agricultural Entomology and Integrated Pest Management, School of Agriculture and Biotechnology, University of Eldoret.

**Dr. Khanyisile Litchfield Tshabalala (PhD)** – Continental Chairperson African Parliamentary Network on Illicit Financial Flows (APNIFFT).

**Prof Munyaradzi Mawere (PhD)** - Professor Extraordinarius of Interdisciplinary Research (UNISA), and a Full Professor of African Studies at Great Zimbabwe.

**Prof Mariama Awumbila (PhD)**, Department of Geography and Resource Development and Centre for Migration Studies, University of Ghana.

### Interfaculty board

**Dr. Jacob Onyango (PhD)** - Dean, School of Arts, Humanities and Social Sciences

**Dr. Hosea Kiplagat (PhD)** - Dean, School of Education

**Dr. Caroline Ayuma (PhD)** - Dean, School of Business, Economics and Management Sciences,

**Prof. Victor Kimeli (PhD)** - Director, Directorate of Information and Communication Technology

**Prof. Doland Otieno (PhD)** - Dean, School of Science

**Dr. Nicholas Kiprop (PhD)** - Dean, School of Agriculture

**Dr. Mark Kiptui (PhD)** - Dean, School of Environmental Science

**Dr. Eng. Clement Kiprotich (PhD)** - Dean, School of Engineering

### Research Fellows and Associates

**Dr. Otieno Ong'ayo (Antony) (PhD)** - A political scientist, Researcher Fellow, International Institute of Social Studies Erasmus University. Visiting scholar, University of Eldoret.

**Odilia Anyachi Okonga (BSc)** - Founder of the International African School (IAS) in the Netherlands and advocate for educational reform in Africa through African-centred curriculum.

**Prof Auma Okwany (PhD)** - Associate Professor of Social Policy, International Institute of Social Studies (ISS) Erasmus University.

**Dr. Leonard Muaka (PhD)** - Chair, Department of World Languages and Cultures. Professor of Swahili, Howard University, Washington, DC, USA.

**Dr. Njeri Rahab (PhD)** - Historian, decolonial scholar, and community activist. Board member Health Committee City Cologne, International African School, consultant University of Cologne.

**Dr. Luanga Nchari (PhD)** - Chemical engineer and Senior Scientist Processing, NIZO, Netherlands.

**Godian Ejiogu (MA)** - Theologian, Philosopher, Spiritual care practitioner and trainer, Netherlands.

**Dr. Dennis Obonyo Ndolo (PhD)** - Group Leader - Biopesticides at International Centre for Genetic and Engineering (ICGEB), Cape Town, South Africa.

**Grace Kavochi McBride (MEd)** - Early Childhood Education Specialist in USA.

**Dr. Liesbeth Simone Peroti** - Specialist in music pedagogy, performing arts and musicology Netherlands (Rotterdam Conservatory), Jamaica (Edna Manley College for Visual and Performing Arts) and Ghana (University of Cape Coast).

**Dr. Marie-Antoinette Stellamaris Nyanchama Okemwa, (PhD)** - Chair of ENAR Aisbl and ENAR Foundation, Policy and Advocacy consultant, Human Rights Defence, Decoloniality, Belgium.

**S'thabile Mlotshwa (BA)** - Executive director Thamgidi Foundation, Artistic Director Festival De Oase, Producer, artistic director IFAA 2008, IFAA Art Platform and curator, Netherlands.

**Wema Mumma (MA)** - Film Programmer and Events Manager. British Film Institute's annual London Film Festival, Disney, BAFTA, and Channel 4. UK and Kenya.

**Dr. Moffat Moyo (PhD)** - Literary critic and poet. Zambia's UNESCO- international expert and trainer on intangible cultural heritage. University of Zambia.

**Ms. Stella Simiyu (MA)** - Director Regulatory Affairs and Stakeholder Relations, CropLife AME, Kenya.

**Dr. Muchimuti Erastus (PhD)** - Lecturer, School of Education, University of Eldoret

**Dr. Richard Ochieng (PhD)** - Lecturer, School of Arts, Humanities and Social Sciences, University of Eldoret

**Dr. Seraphine Chepkosgei (PhD)** - Lecturer School of Arts, Humanities and Social Sciences, University of Eldoret

**Dr. Eliza Ngutuku (PhD)** - Researcher, London School of Economics

**Pius Odhiambo (MSc)** - Data Scientist in Washington DC, USA. Founder of KISWATE Digital Academy Scholarship Fund, KISWATE TV, KISWATE Community Service Program. Director General Blue Nile Analytica and AirForce Research Lab (AFRL), Bowie State.

**Dr. Mary Mangai (PhD)** Senior lecturer, School of Public Management and Administration (SPMA), SPMA research representative at the faculty, University of Pretoria, South Africa.

## International Partnerships and Research collaborations

1. International African School (IAS), Netherlands
2. International Centre for Genetic and Engineering (ICGEB), Cape Town, South Africa.
3. African Diaspora Policy Centre, The Hague, Netherlands
4. Africa Study Centre - Leiden University, Netherlands
5. Faculty of Humanities Department of Media and Culture Studies, Utrecht University, Netherlands
6. Development Studies, University of Kwazulu Natal (UKN), South Africa
7. Kenyan Embassy in Berlin, Germany
8. School of Public Management and Administration, University of Pretoria, South Africa.